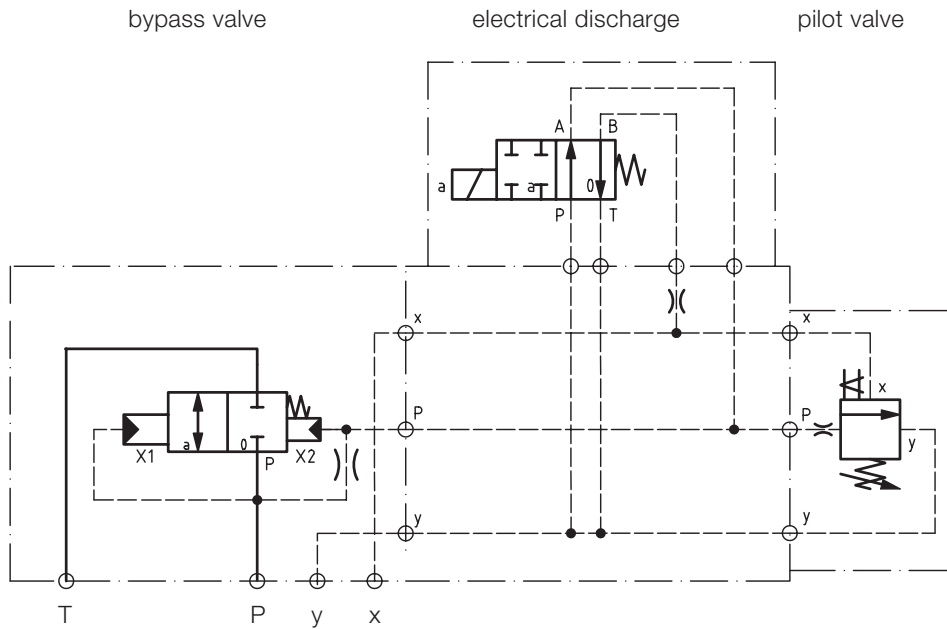


## Electrical Discharge for Accumulator Charging Valves Technical Data Sheet



- Unpressurised machine start up
- Electrical accumulator relief
- Suitable for accumulator charging valves
  - NG 6 ISO 4401
  - NG 10 ISO 4401
  - kit/block mounting

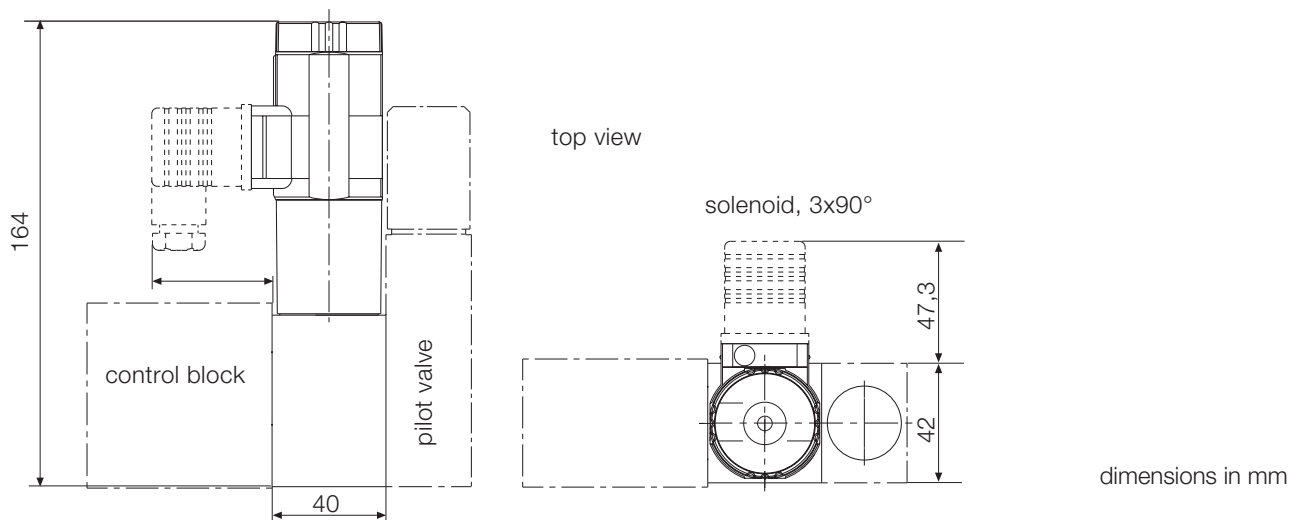
## Diagram



In the open position, the valve is de-energized. P is connected to y (tank) and the accumulator charging valve switch over to pressureless circulation. The accumulator is connected to y (tank) and will be discharged.

When the valve is energized the above-mentioned line (P/y) is disconnected and the circuit operates under control of the pilot valve.

## Dimensional drawing



## Technical Data

### General

Type of valve	piston valve
Operation	electric
Mounting position	any position
Ambient temperature	-5 to +50 °C

### Hydraulic

Operation pressure P,A,B	max. 315 bar
Operation pressure T	max. 150 bar
Hydraulic oil temperature	-10 to +70 °C
Viscosity	10 to 300 mm <sup>2</sup> /s
Max. flow	30 l /min

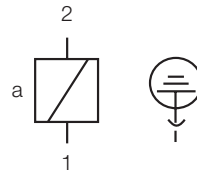
### Electric

Voltage (±10%)	24 V DC	230V, 50Hz AC
Switching time on*	17 ms	25 ms
Switching time off**	17 ms	25 ms
Power consumption P20	20 W	
Start up peak P20		64 VA
Duty factor	100%	100%
Protection DIN 40050	IP65 plugged in	

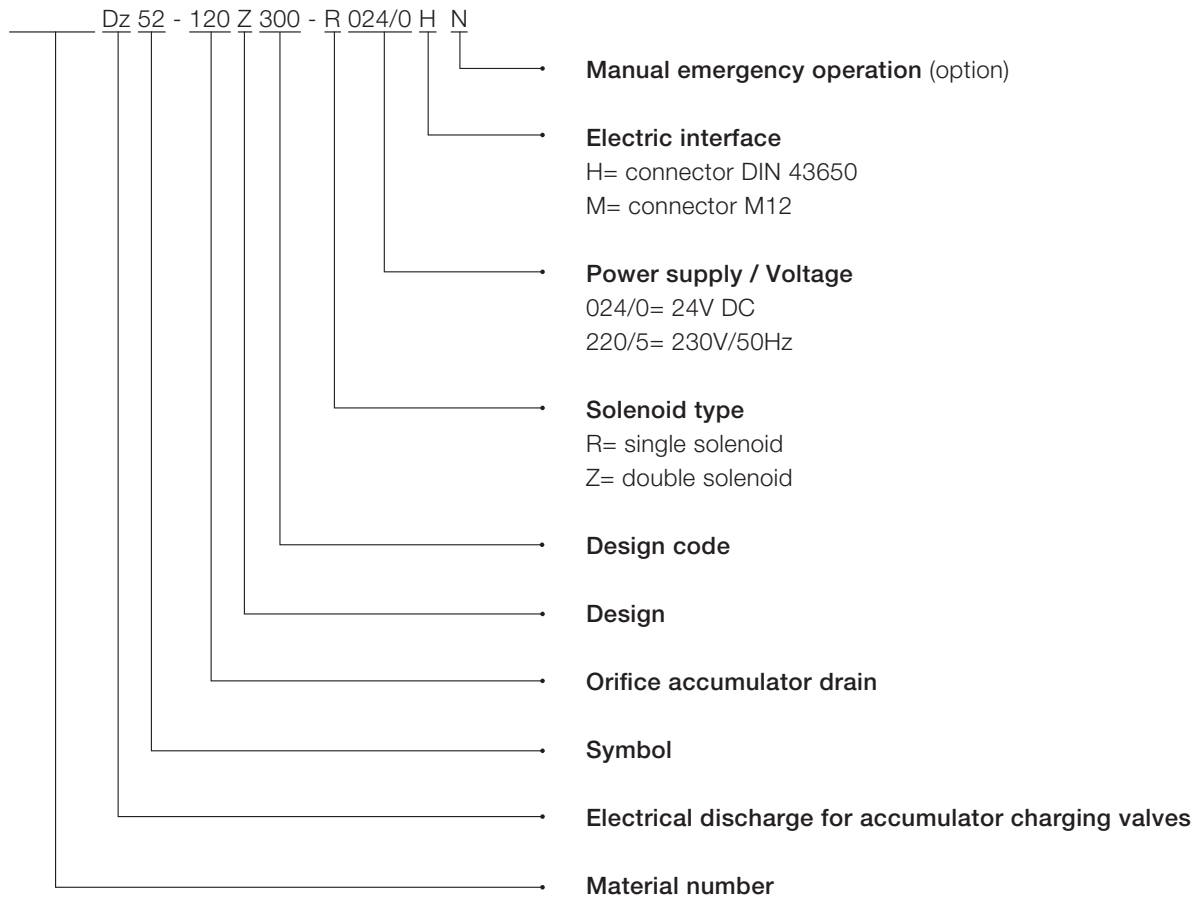
\* at 24V DC ± 5%

\*\* at terminal voltage = -50V at free circuit

## Electric Connection



## Type Code



This is a translated document. Original language: german.  
Legally binding language version of document: german.

Voith Turbo H + L Hydraulic GmbH & Co. KG  
Schuckertstraße 15  
71277 Rutesheim, Germany  
Tel. +49 7152 992 3  
Fax +49 7152 992 400  
sales-rut@voith.com  
www.voith.com/hydraulic-systems



**VOITH**  
Engineered Reliability